

# Compliance. Transformed.

## Why now?

The need for resilience and trust in compliance processes has never been greater:

- Businesses are under pressure to deliver more for less
- Businesses need insights to create competitive advantage
- Public expectations regarding equity and fairness are high
- Taxation collection will be a future Government priority in light of Covid-19
- Inland Revenue now has technology enabled and enhanced investigation capabilities

## What?



Optimising technology, process and people to deliver all your tax needs with increased resilience, trust and insights, whilst reducing your cost and risk.

## How?

PwC is focused on helping businesses thrive in change by helping them manage compliance requirements in a way which also benefits their wider organisation.

The 5 attributes of Highly Effective Compliance:

<p><b>Strategically aligned</b></p> <p><b>Tax governance</b> Is the way you manage tax helping enable progress with your strategic priorities?</p> <p><b>Regulatory environment</b> What does your tax profile say about your brand? Are risk and rewards appropriately matched? What's your total tax contribution?</p>	<p><b>Considers customer experience</b></p> <p><b>Tax Policy</b> What is your relationship with Inland Revenue as a key stakeholder?</p> <p><b>Global mobility and executive remuneration</b> Does your people experience attract &amp; retain the best tax talent?</p> <p><b>Tax advice and advisor engagement</b> How easy it is to work with your tax advisers (at home and overseas)?</p>	<p><b>Technology enabled</b></p> <p><b>Process automation and technology</b> What actions are you currently taking to reduce time spent by your team on manual processes? How have you leveraged tax technology to reduce costs &amp; risks?</p> <p><b>R&amp;D tax incentives</b> How is your innovation being supported?</p>	<p><b>Human centred design</b></p> <p><b>Tax disputes</b> Does your approach to tax incorporate a strong understanding of human behaviour to drive compliance or quick disputes resolutions?</p> <p><b>Tax function effectiveness</b> Does your tax function drive the right behaviours to unlock data and provide insights? What operating model is right for you?</p>	<p><b>Predictive and preventative</b></p> <p><b>Tax reviews and GAP analysis</b> How well do you know where your key tax risk lies?</p> <p><b>Professional development</b> How can you be sure that your tax compliance processes take account of the very latest tax developments?</p>
--	---	---	---	---

# A focus on tax – Tax Transformed.

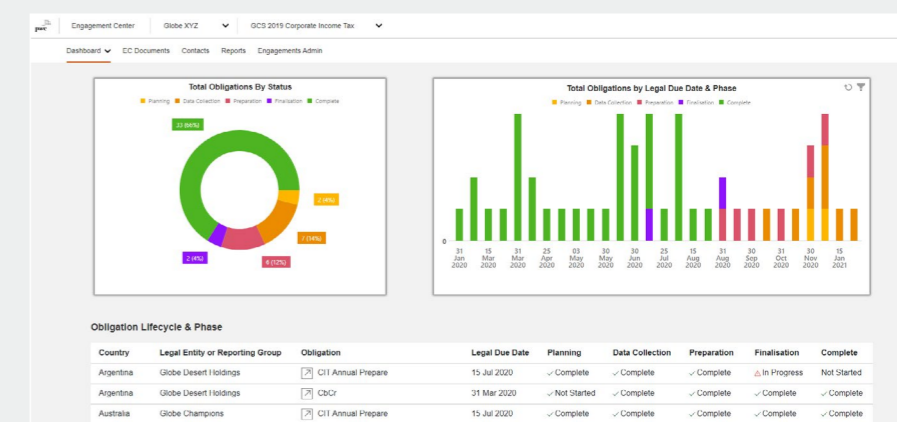
## Here to help

We're helping our clients to evolve their tax compliance to:

- Provide a better experience
- Lower costs & gain efficiencies
- Get better coverage
- Enable better planning
- Provide more flexibility & resilience
- Mitigate risk

## Better experience PwC Engagement Centre

A digitised experience that provides our clients with real-time updates on their compliance and tax advisory needs through a collaborative secure online platform.



View our transformation stories on [pwc.co.nz/compliance-transformed/tax](http://pwc.co.nz/compliance-transformed/tax)

**Video 1:** Why are we talking about compliance and what needs to change to unlock strategic advantage?

**Video 2:** Tax landscape: Today and tomorrow's tax landscape – are you ready?

**Video 3:** PwC's transformation: Learning from PwC's own tax transformation journey.

**Video 4:** The "new normal": What will a tax dispute look & feel like in the "new normal", and what should you do now to manage it?

**Video 5:** Certainty in complexity: Supporting our clients when tax becomes complicated and more is at stake.

**Video 6:** Client transformations: How are our clients positively transforming their tax compliance, and are you missing a trick?

## Who?

Talk to us about the effectiveness of your tax compliance and how we might work together to deliver better outcomes



**David Lamb**  
david.lamb@pwc.com  
+64 21 941 466



**Leigh Tomei**  
leigh.x.tomei@pwc.com  
+64 22 301 3652



**Rajul Makan**  
Rajul.r.makan@pwc.com  
+64 27 274 8627