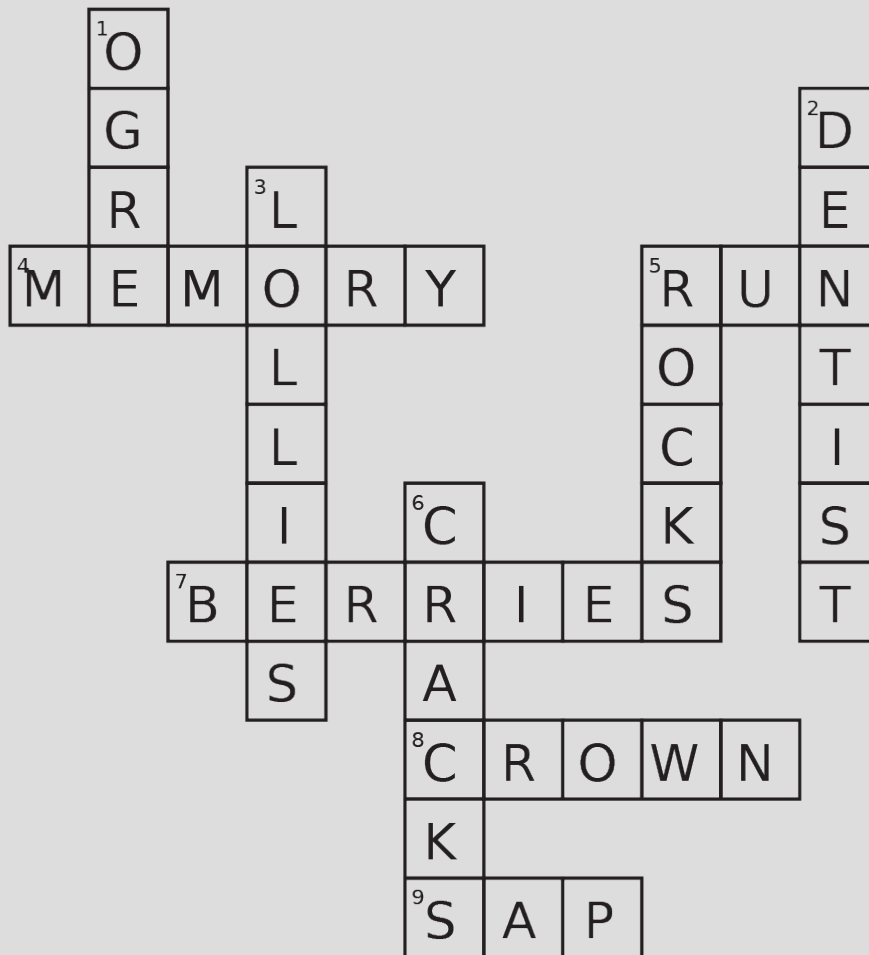


AHO Kōrero

PwC Schools Journal

Answer booklet



Down

- 1 In **The Clock Strikes Midnight** what creature does Aretha transform into at thirteen?
- 2 In **Dentist Disaster** where does Izzy unexpectedly end up instead of school?
- 3 What replaces money and gives people powers in **Life in T Land**?
- 5 In **The Mysterious Creature** what does the creature feed on from the lake?
- 6 In **Teleportation** what unusual marks suddenly appear on the narrator's face?

Across

- 4 In **A Forgotten Memory** what is being destroyed by the machine?
- 5 In **The Black Figure** what word is written inside the mysterious bottle?
- 7 In **Claws the Baby Dragon** what does Claws eat that gives him magical powers?
- 8 In **The King and the Alien Chase** what valuable item do the aliens try to steal?
- 9 In **The Stuck Spider** what substance traps Biggie inside the tree?

Expand your vocabulary by discovering new words from the Te Ao Tūturu section and pairing them with their meanings

Anticipation		Shines softly
Shimmers		Excited feeling
Ecosystem		Happy event
Torment		Move quickly
Thriving		Protection
Shield		Loud sound
Scramble		Cause pain
Roaring		Living system
Celebration		Growing well



Find the hidden words in the puzzle.

Words are hidden down, across and diagonally.

Firefighter

Football

Library

Medics

Friend

Treaty

School

Superstar

Blanket

Cookies

Trench

ANZAC

Warrior

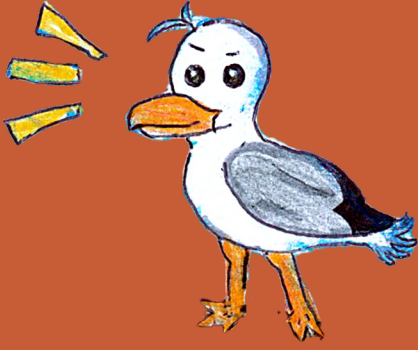
Agent

Waitangi

Morning

Family

Rugby



6 | Aho Kōrero

Answer booklet