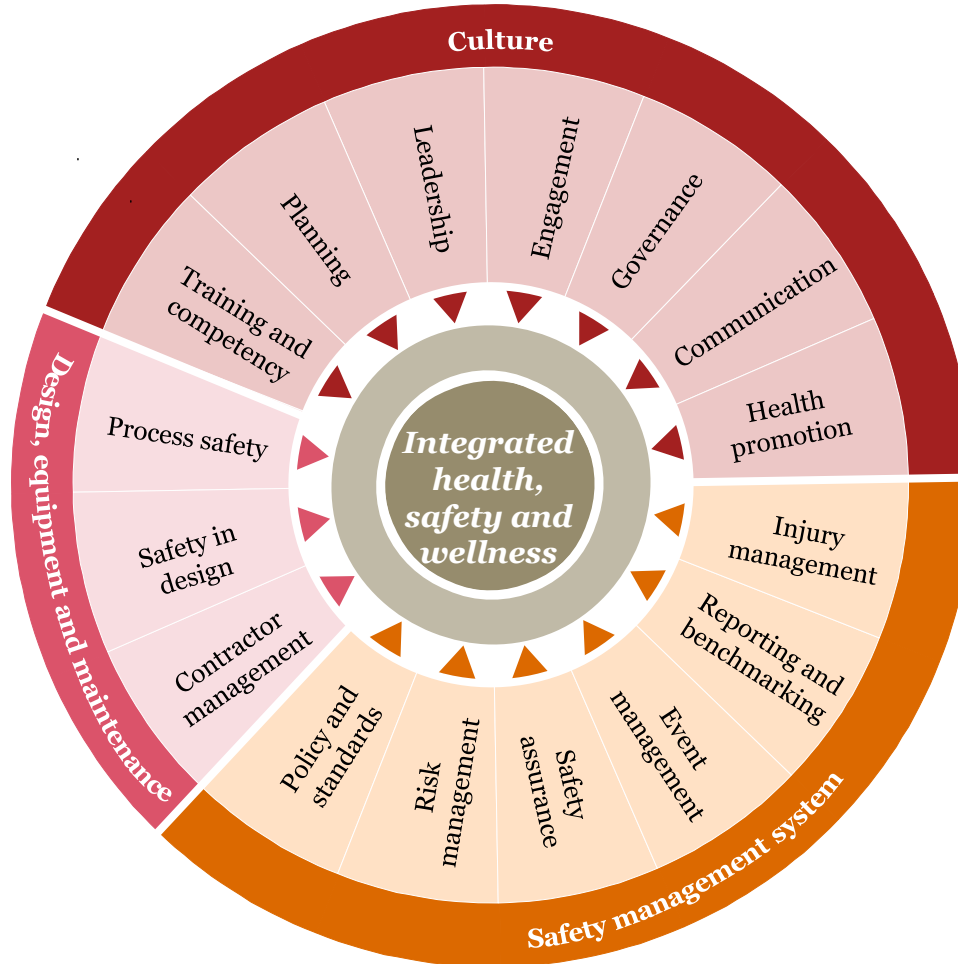


pwc.co.nz

Achieving excellence in health, safety and wellness

We look at integrated health, safety and wellness (HSW) practices across an organisation by reviewing each key element across a five-step scale.

A maturity assessment is important as it shows where focus is required – leading to HSW excellence.



Integrated HSW means that organisations take a holistic view of health promotion and health protection activities.

Understanding your workers and their needs is vital to achieving long-term sustainable outcomes.



How we can help...

Culture

We assist organisations to understand the barriers and enablers to achieving their health, safety and wellness (HSW) goals from a cultural perspective and develop programmes to address issues at all levels of the organisation – including leadership and engagement.

Planning

We work with organisations to develop strategic plans that achieve their HSW goals.

Competency frameworks

We assist organisations in ensuring that all its people have the required and up-to-date knowledge to undertake work in a safe manner. We identify training needs and develop and implement competency frameworks.

Bow Tie and safety cases

We assist organisations develop, measure and monitor the key controls necessary to manage their critical risks utilising methodologies such as Bow Tie workshops.

Development of health and safety management systems

We can perform a management system health check and assist organisations in developing policy, standards and procedures that are simple, effective and linked to the wider goals of the organisation.

Critical risk reviews

As part of an organisation's primary duty of care and officer's due diligence, we work with organisations to understand critical risks and their control systems. Organisations need to understand their current and ongoing exposure levels to operate safely and fulfil their regulatory requirements.

Governance reviews

We assist organisations align their governance processes to best achieve their HSW goals through governance, effectiveness reviews and training. This includes understanding and refining the roles and accountabilities of the health and safety professional officers and management of the organisation.

Directed wellness

We help organisations to better target their wellness budgets, to gain the best measurable effect by understanding the needs of the workforce, and tailor programmes that achieve long-term safety goals.

Benchmarking and research

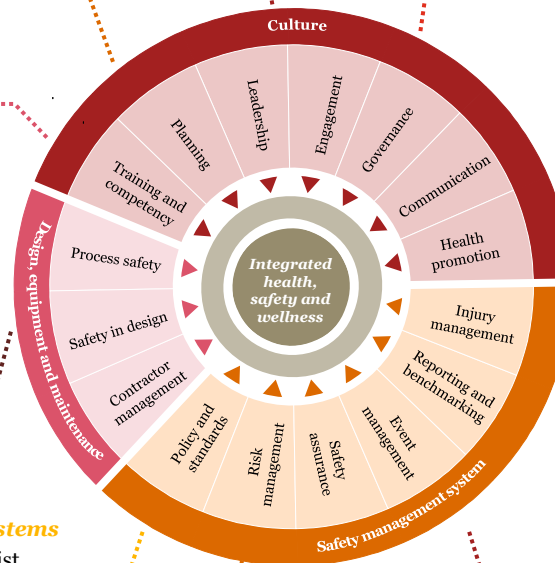
We assist organisations in reviewing and comparing industry trends and through providing access to global international thought leadership. We also help organisations to understand their HSW data by providing leading analytic capability.

Event investigations

We assist organisations by leading or peer reviewing health and safety investigations of single events and/or event trends.

Independent reviews of HSW

Integrated into internal and or external audit programs, we utilise a principles based approach to understand how effectively the organisation is controlling its risks and managing its HSW environment.



Get in touch



Chris Alderson
Director

T: +64 9 355 8103
M: +64 21 473 757
E: chris.p.alderon@nz.pwc.com



Alistair Donald
Director

T: +64 9 355 8074
M: +64 21 962 449
E: alastair.donald@nz.pwc.com